



Mezzer ESSETEX

Drum-Type Tensionless Continuous
Treatment for Open-Width Knitted
and Woven Fabric

Drum-type continuous treatment for open-width fabrics



Drum-type continuous treatment for open-width fabrics

- Forced washing on a fluted drum unit
- Horizontal and vertical countercurrent flow (high efficiency) exchange
- Single or double treatment boxes
- Running tensionless

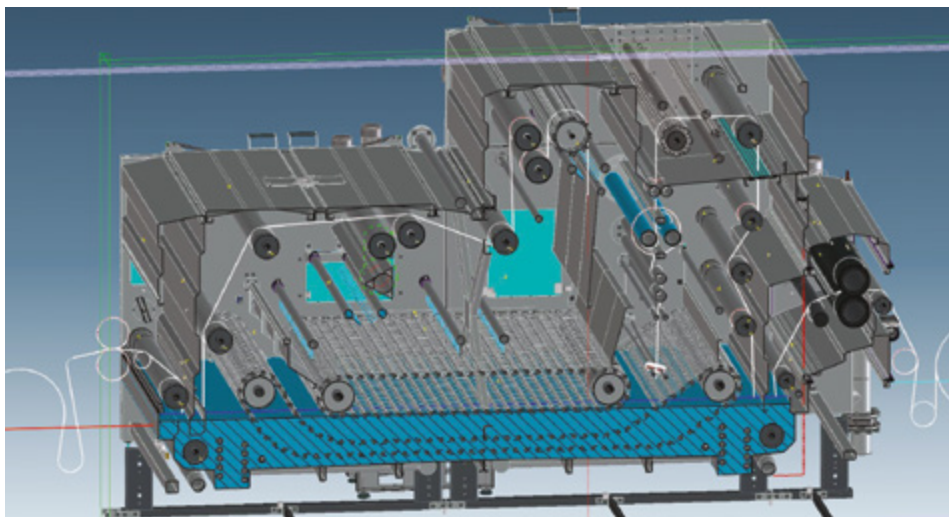
The ESSETEX treatment unit is equipped with two large-diameter fluted drums individually driven by A.C. motors with frequency control through the inverter.

Perfect tension control

With the ESSETEX, fabric tension is measured in real time throughout the load cells and/or dancing rollers. This value is then relayed to the PLC and compared to the nominal value supplied by the operator. Synchronising motors automatically set any difference to zero through the inverter. This system, called “closed loop control,” is accurate, fast, and one of the most advanced washing technologies currently available in combination with short, centre-to-centre distances among drums and rollers, the closed loop control system makes the ESSETEX washing unit suitable for process-knitted fabric as well as woven fabrics with critical problems of stability, e.g., selvages curling, high-tension sensitivity, and so on.

Adjustable water jet

A circulation pump feeds six sets of sprayers per drum to improve the washing effect by hydro-mechanical energy; stainless steel deflectors are provided on each sprayer to avoid direct spraying of fabric, whenever forceful mechanical action is not recommended. Fluted drums improve the washing effect by allowing the sprayed water to pass through the fabric, thereby washing not only the surface but deeply into the fabric itself.



HWT version (High Water Temperature)

Mezzeria introduced the HWT concept more than 20 years ago on roller-type compartments. Now, it is working to its fullest in the ESSETEX. Before reaching the sprayers, the water is overheated by a heat exchanger up to 105°C; thus the fabric is treated with a mix of steam and water, providing an effective combination of thermal and mechanical energy.

Processes

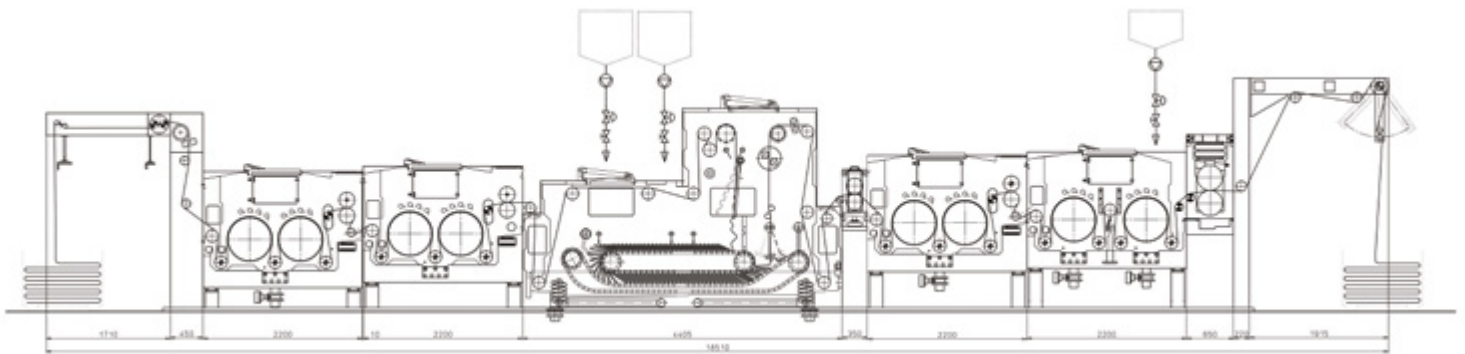
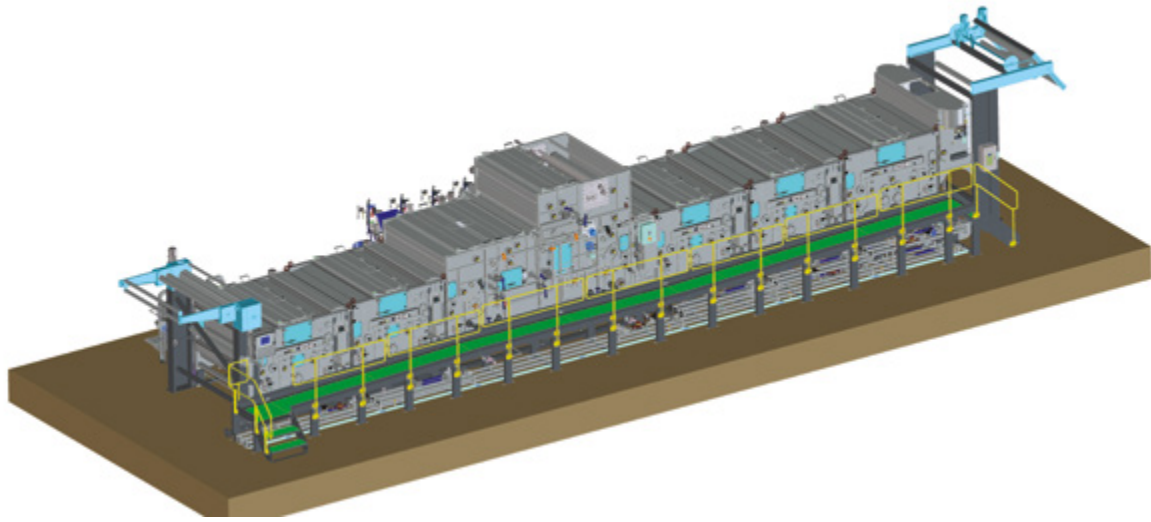
Several processes can be carried out by combining the ESSETEX with other washing units. The washing range for knitted fabrics (with and without elastomer) can also treat woven fabrics, especially curtains. The same range can scour and wash woven fabrics prone to creasing. In fact, the ESSETEX's accurate fabric guide and perfect tension control ensure the total absence of creases.

The ESSETEX can scour, bleach, and mercerise all knitted and woven fabrics, ensuring the best final quality. The PC/PLC manages all process parameters (temperature, speed, tension, working water, products, etc.).

When the ESSETEX is combined with the rope-washing range CONCORD, it achieves near flawless after-printing treatment; when the ESSETEX is also coupled with the dwelling unit STT, it can swell and wash off printing thickeners before the CONCORD completes the cycle. The same process applies to open width: simply combine the ESSETEX with the soaping compartment ONDALAX when the fabric quality does not permit working in rope.



This solution increases the washing effect dramatically, facilitating the removal of glues like PVA, ACRYLIC, CMC, and, when performed in combination with enzyme HT amino-acid glues as well.



TECHNICAL DATA	21-HWT	21-S	22-S
Roller width (mm)	1800±3600	1800±3600	1800±3600
Fabric content (m)	4.6	4.6	5.6
Liquor volume (l/m)*	600	600	610*
Installed power (kW)	14	11	18
Fluted drums	YES	YES	YES
Sprayers per drum	6	6	6
Overheated water	YES	NO	
Double compartment	NO	NO	

*per metre of roller width ** (270±340)

Let's be brilliant. Together.

We understand you want breakthrough technologies to lead you through your digital journey. That's why we're passionate about driving your business growth with a scalable portfolio of products, solutions, services, support, and world-class partnerships for the manufacturing of signage, packaging, textiles, ceramic tiles, and building materials with a wide range of printers and inks. Our unwavering commitment is to increase your profits, cut costs, improve productivity, and optimise efficiency — job after job, year after year. We're obsessed with your success. And we definitely believe we have the right people, technology and experience to help your business achieve its goals. Visit www.efi.com/reggiani or call +39 035 3844511 for more information.



Nothing herein should be construed as a warranty in addition to the express warranty statement provided with EFI products and services.

AutoCal, Best Eye, ColorGuard, ColorPASS, ColorRight, ColorWise, Command WorkStation, Cretachrom, Cretaprint, the Cretaprint logo, Cretaprinter, Cretaroller, Divisional Graphics, Distancing Graphics, DocBuilder, Dynamic Wedge, EDOX, EFI, the EFI logo, Electronics For Imaging, FabriVU, Fast-4, FASTRIP, FASTDRIVE, Fiery, the Fiery logo, Fiery Compose, Fiery Driven, the Fiery Driven logo, Fiery Edge, Fiery Essential, Fiery HyperRIP, Fiery Impose, Fiery Impress, Fiery ImageViewer, Fiery Intensify, Fiery JobExpert, Fiery JobFlow, Fiery JobMaster, Fiery Navigator, Fiery Prep-it, Fiery Prints, the Fiery Prints logo, Fiery TrueBrand, FreeForm, Inkintensity, Inkware, IQ, MicroPress, OneFlow, PressVu, PrintMe, the PrintMe logo, Prograph, ProGraphics, RIPChips, RIP-While-Print, SafeGuard Graphics, Spot-On, Spot Pro, UltraDrop, UltraPress, UltraTex, UltraVu, UV Series 50, VUTEk, the VUTEk logo, and WebTools are trademarks or registered trademarks of Electronics For Imaging, Inc. and/or its wholly owned subsidiaries in the U.S. and/or certain other countries.

All other terms and product names may be trademarks or registered trademarks of their respective owners and are hereby acknowledged.