

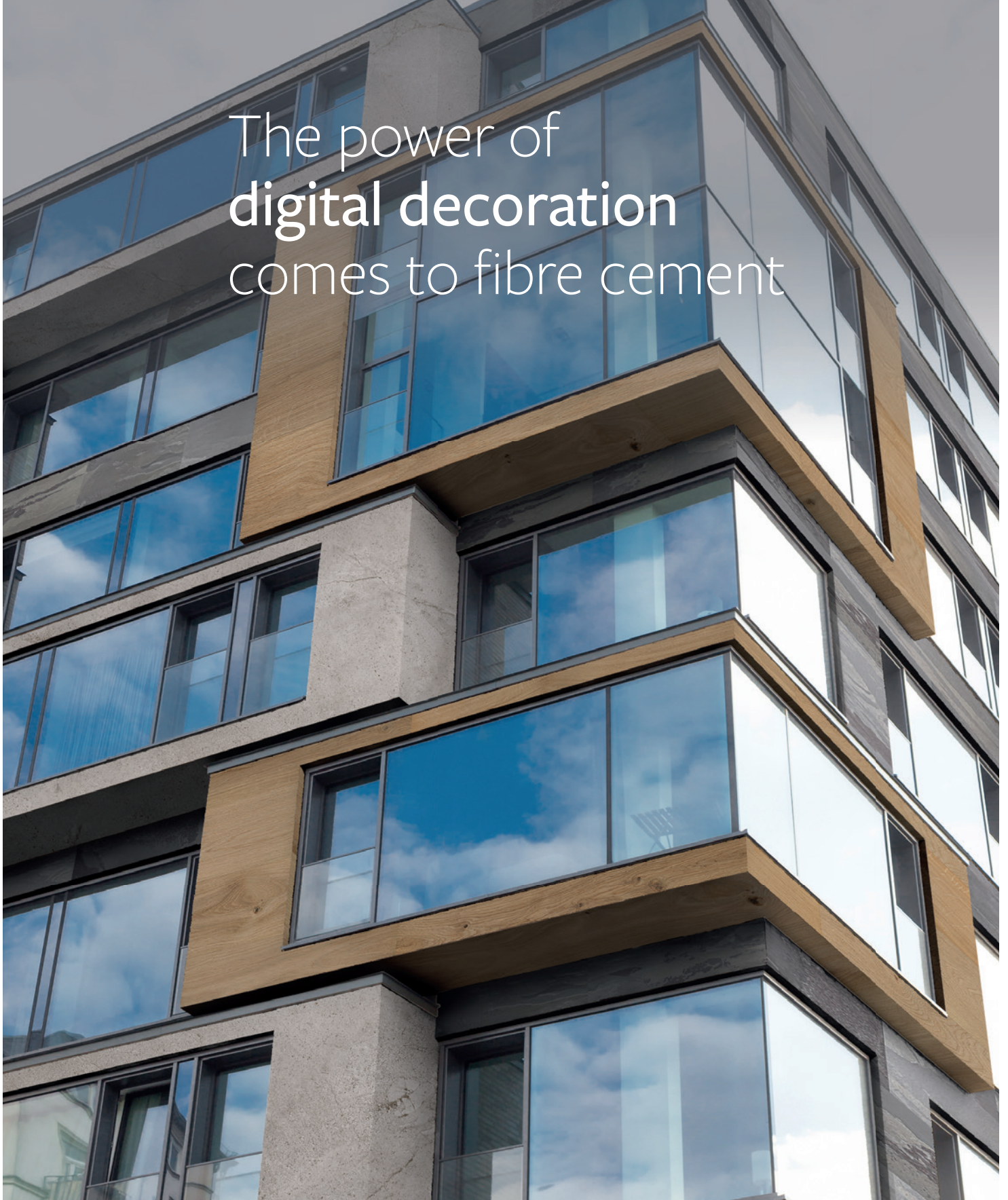


Cubik

Single-pass Inkjet Technology

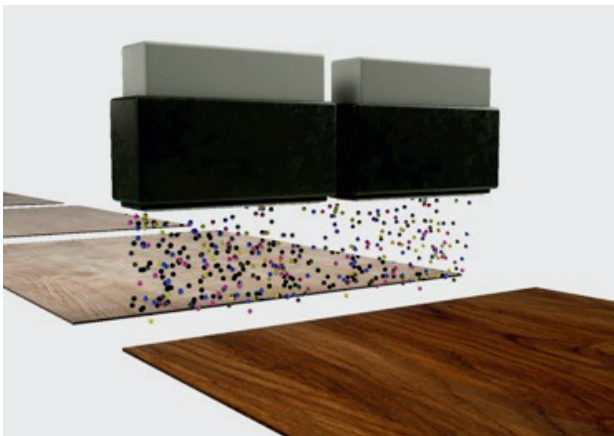
for fibre cement decoration

The power of
digital decoration
comes to fibre cement



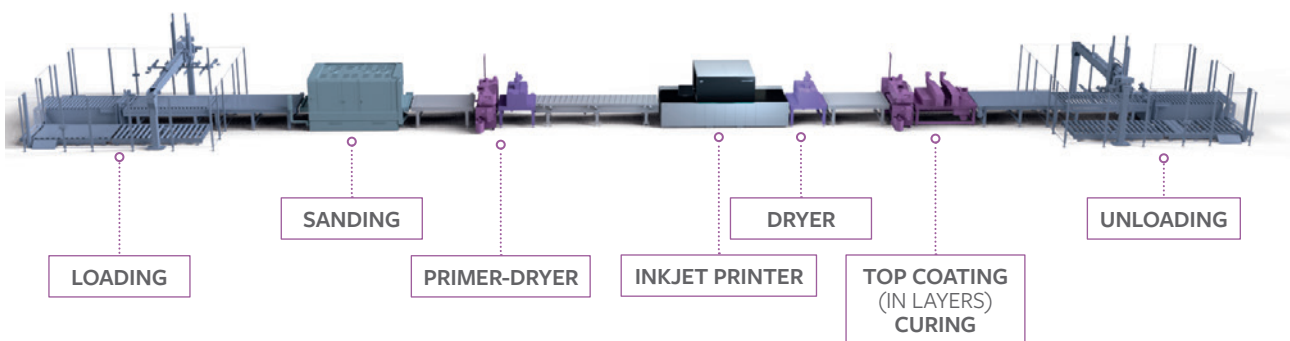
Single-pass digital inkjet printing explained

Digital printing is a new, cost-effective, and efficient option for the decoration of fibre cement boards. Single-pass digital inkjet printing technology allows you to jet ink directly onto board substrates as they pass through the printer at high rates of speed and under a fixed array of print heads spanning the width of the printer.



- Contactless, single-pass printing
- No need for rollers, plates, and tooling
- Endless decoration possibilities
- Print to the edges of the fibre cement boards
- Print on non-flat substrates
- Immediate set up and model changing
- No minimum batch size to be cost-effective
- No highly skilled staff needed
- Industrial printing speed for maximum productivity
- Total control of colour results and consistency

DIGITAL INKJET PROCESS



EFI Cubik printers for fibre cement decoration

EFI™ Cubik single-pass digital inkjet printers make it easy to add digital printing to your decoration process. They not only complement your current mass-colouring process, but also give you the flexibility and agility to develop new products fast.

- Ready to operate in industrial environments 24/7
- Available in 710 mm and 1440 mm printing widths
- Decorate boards and planks up to 120 mm thick
- Capable of reaching printing speeds up to 50 linear m/min
- Comes with a high-performance Fiery® proServer digital front end with dedicated colour management software for colour consistency and full control of the printed results
- Available with technical assistance and remote service to keep your EFI Cubik digital decoration printer up and running
 - Options to configure a service programme for the services and rates that work best for your equipment and your business

Fibre cement decoration with mineral inks

Mineral inks can be printed direct to fibre cements substrates, and they decorate naturally as the inks integrate into the fibre cement. Varnishes and protection layers can be applied after inkjet printing.

- Inorganic composition
- Lightfast
- Colours available are Cyan, Magenta, Yellow, Black, Pink, White



TECHNICAL DATA

MACHINE SPECIFICATIONS	S700	S1400
Max. printing width (mm)	Up to 710	Up to 1440
Number of inks	Up to 8	Up to 8
Max. board length (mm)	3600	
Print direction	Right/Left	
Min. board thickness (mm)	From 3	
Max. board thickness (mm)	Up to 30	Up to 120
Print speed (m/min)	Up to 50	Up to 50

MACHINE ASSEMBLY	S700	S1400
External power supply	Variable (380/400/440/480V)	
Max. power consumption (8 colours)	18 KVA	44 KVA
Electrical phases	3F+GND	
Power connection frequency	50/60 Hz	
Pneumatic connection	7 BAR 8,5 BAR	
Cabin recommended temperature	22-26 °C	
UPS included	Yes	

DIMENSIONS PRINTER	S700	S1400
Width (mm)	1640	2200
Height (mm)	1950	2250
Length (mm)	4500	6250

DIMENSIONS CABIN (INNER)	S700	S1400
Width (mm)	4100	6500
Height (mm)	2500	3100
Length (mm)	5500	7000

SOFTWARE	
Image file type	TIFF and RPF
Rendering time	Variable
Image changing time during production	1 s
Parallel RIPing and printing	Yes
Number of images per model	100
Print an image without stopping	Yes

PRINTHEADS	
Printhead width (mm)	108,3
Number of nozzle	1536
Native resolution (dpi)	360
Drop size (pL)	13 - 98 pL
Greyscale levels	Up to 8
Firing frequency (kHz)	10,2 - 28
gr/m²	Up to 45

Printer in development, specifications subject to changes without notice.

We develop breakthrough technologies for the manufacturing of signage, packaging, textiles, ceramic tiles, building materials and personalised documents, with a wide range of printers, inks, digital front ends, and a comprehensive business and production workflow suite that transforms and streamlines the entire production process, increasing your competitiveness and boosting productivity. For more information on EFI Cubik products or to speak to an EFI Cubik specialist directly, please call +34 964 340 264, email cubiksales@efi.com or visit www.efi.com.



Nothing herein should be construed as a warranty in addition to the express warranty statement provided with EFI products and services.

AutoCal, Auto-Count, Best Eye, ColorGuard, ColorPASS, ColorRight, ColorWise, Command WorkStation, Cretachrom, Cretaprint, the Cretaprint logo, Cretaprinter, Cretaroller, Digital StoreFront, Divisional Graphics, Distancing Graphics, DocBuilder, Dynamic Wedge, EDOX, EFI, the EFI logo, Electronics For Imaging, EPCount, EPPhoto, EPRegister, EPStatus, Estimate, FabriVu, Fast-4, FASTRIP, FASTDRIVE, Fiery, the Fiery logo, Fiery Compose, Fiery Driven, the Fiery Driven logo, Fiery DesignPro, Fiery Edge, Fiery Impose, Fiery ImageViewer, Fiery Intensify, Fiery JobExpert, Fiery JobFlow, Fiery JobMaster, Fiery Navigator, Fiery Prints, the Fiery Prints logo, FreeForm, GameSys, Hagen, Inkintensity, Inkware, IQ, iQuote, LapNet, Lector, Logic, MarketDirect StoreFront, MarketDirect VDP, MarketDirect Cross Media, Metrics, Metrix, MicroPress, Monarch, Monarch Planner, OneFlow, Optima, Optitex, Organizing Print, Pace, Pecas, Pecas Vision, PC-Topp, PressVu, PrinterSite, PrintFlow, PrintMe, the PrintMe logo, PrintSmith, PrintSmith Site, PrintSmith Vision, PrintStream, Profile®, Process Shipper, Prograph, ProGraphics, PSI, PSI Flexo, Radius, RIPChips, RIP-While-Print, SafeGuard Graphics, Spot-On, Spot Pro, Synchro 7, Technique, UltraDrop, UltraPress, UltraTex, UltraVu, UV Series 50, VisualCal, VUTEk, the VUTEk logo, and WebTools are trademarks or registered trademarks of Electronics For Imaging, Inc. and/or its wholly owned subsidiaries in the U.S. and/or certain other countries.

All other terms and product names may be trademarks or registered trademarks of their respective owners and are hereby acknowledged.