



## Nozomi 14000 SD

Single-pass LED Inkjet Printer for Sign and Display

Technology designed to disrupt





# Boost your growth and profitability

The super-high-speed, high-quality production capabilities of the EFI™ Nozomi 14000 SD single-pass LED printer is nothing short of disruptive. The 1.4-meter-wide printing platform gives you the opportunity to significantly improve your speed to market and increase profitability.

The EFI Nozomi 14000 SD printer is specifically designed for the sign and display market and prints on a wide range of substrates – from polystyrene, foamboard, and Coroplast® to folding carton, card stock, and more.







# Disrupt the status quo with exceptional print quality at super high speeds

Ready to disrupt marketplace expectations about digital inkjet image quality at super high speeds? The EFI Nozomi 14000 SD printer delivers premium quality imaging with CMYK plus optional White, Orange and Violet, an 805-dpi apparent resolution, smooth gradients, and brilliant colors for high image quality.



# A competitive edge is only sharp when it's disruptive

Gain a larger share of the market and improve customer satisfaction – all while lowering your costs. With the EFI Nozomi 14000 SD printer you'll get higher productivity, reliable uptime and production efficiencies that will drive more profits to your bottom line.



# The best opportunities are disruptive opportunities



## Maximum productivity that assures more profits

- Up to 1,100 boards/sheets per hour\*
- Up to 196 linear ft/min (60 linear m/min)\*\*



## Premium print quality that wins more jobs

- Optional Orange and Violet expand color gamut to achieve 97% of Pantone® library
- An inspection system provides functionalities helping to adjust the printer to mask any print defects.
- Meets the demanding color standards of Fogra, G7 and GRACoL, ensuring color consistency throughout the digital printing process and other printing methods



## Digital technology that drives production savings

- Reduce your cost-per-print by replacing make-ready from offset litho or screen print processes with digital
- Reduce your footprint and labor resources by consolidating production onto one Nozomi press
- Reduce your waste by printing direct to sheet and removing the lamination process



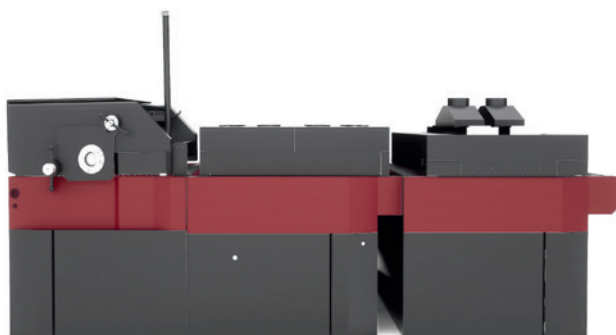
## Superior sustainability that meets customer demands

- An efficient process that consumes fewer resources and generates less waste by consolidating all production onto one Nozomi press
- Single-pass ink pile reduces ink use and cost
- **100% environmentally friendly** GREENGUARD and GREENGUARD Gold certified inks with no VOCs and no odor
- Repulpable and recyclable inks, OCC certified, for paper-based substrates such as corrugated containerboard

\* Sheet size: 55.2 in x 118.1 in (140 cm x 300 cm).

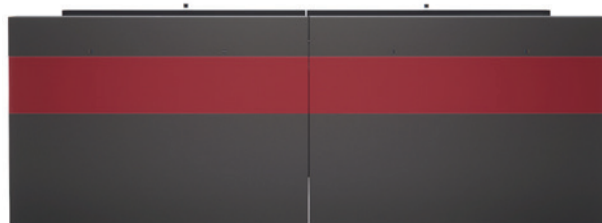
\*\* Consult the specifications of the tested materials as well as the recommendations for optimal printing.

# Modular and flexible, designed to grow as your business grows



## UV AND WB ANALOG PRIMER

149.6 in · 3,8 m



## REGISTRATION TABLE

141.7 in · 3,6 m

Max. print size (WxL): 55.12 in x 126 in · 140 x 320 cm

Max. board/sheet size (WxL): 55.12 in x 126 in · 140 cm x 320 cm

Thickness range: 0.012 in – 0.47 in · 0,3 mm - 12 mm for media that need priming  
(rigid substrates) 0.007 in – 0.47 in · 0,19 mm - 12 mm for media without priming

Regular productivity: Up to 196 linear ft/min (60 m/min)

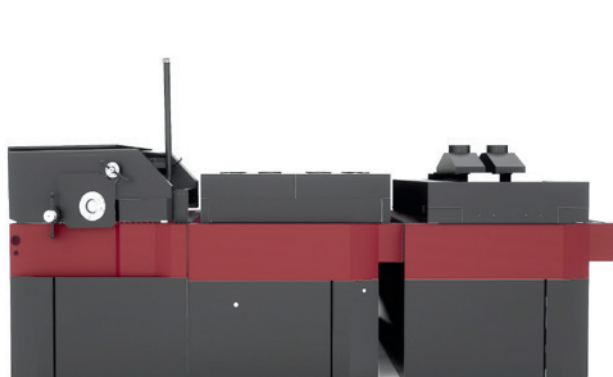
Consult the specifications of the tested materials as well as the recommendations for optimal printing.

An optional scissor lift table is recommended to assist in the hand feeding of materials.

An optional drop box at the end of the line is recommended for sheet collection and stacking.



**SINGLE-PASS INKJET PRINTER**  
**UV LED TECHNOLOGY**  
 149.6 in · 3,8 m



**UV / WB ANALOG COATER (OPTIONAL)**  
 98.4 in · 2,5 m

### NOZOMI 14000 SD INK CONFIGURATIONS

BASE



OPTIONAL



# Ultra-high-quality printing with Genuine EFI Inks

Our Genuine EFI Nozomi SD Series Inks have been custom formulated, tested and optimized for the Nozomi 14000 SD printer. Both the system and inks are developed to assure you get great extended color gamut, durability, reliability, consistency, and predictable running costs. Add our extensive color range and best-in-class Fiery® color management suite, and you get all the quality and performance you'd expect from Genuine EFI Inks – so you always print with flying colors.



## Fiery technology – the **world leader** in digital front end innovation



The Fiery NZ-1000 digital front end provides outstanding image and color quality with features to make your print results truly exceptional.

---

### Fiery technology delivers:

- Advanced color management and extensive toolset for late-stage image editing
- Exceptional print and color quality for complex, graphically rich content
- Stunning out-of-the-box color with smooth color blends, maximum shadow detail, and superb definition
- Accurate reproduction of brand colors plus color matching for consistent print results
- Intelligent automation that analyzes print jobs and dynamically chooses optimal print settings, reducing setup time
- Efficient job management with easy handling of short runs and versioned or variable data printing jobs
- Full visibility into your production with accurate ink estimates and reporting of the actual ink used in print
- Advanced bladed hardware architecture with the processing power to ensure the highest throughput



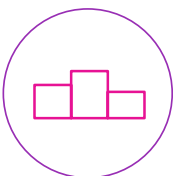
# Value-added training and services working for you

We're there with you every step of the way – during installation, the ramp-up process, and during regular and intensive use – with the only purpose to ensure that you get the most out of your EFI Nozomi 14000 SD single-pass printing investment.



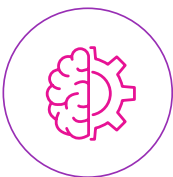
## Ramp-up program

This 13-week program is organized into three stages: basic operator training, advanced printer training, and printer maintenance and troubleshooting.



## Maintenance service

We offer different maintenance agreements levels based on production volumes for you to choose from to maintain optimal print quality, machine stability and reinforce technical training. The maintenance programs include routine procedures and best practices to ensure optimum condition of all components and to avoid unforeseen downtime.



## Smart support

Remote training and support enhanced with augmented reality for real-time, see-what-I-see communication and faster time to resolution.



## LCA tool

Leveraging the EFI life cycle assessment (LCA) tool, we can help you analyze the CO<sub>2</sub> equivalent (CO<sub>2</sub>e) of the environmental impact of your printed jobs, even after their useful life has ended. Using basic values for a print job, the LCA tool quantifies related kilograms of CO<sub>2</sub>e and calculates the advantages of EFI Nozomi digital print technology.

# Optimize your performance. Maximize your investment.

Optimize the operational efficiency and total cost of ownership of your EFI Nozomi SD 14000 printer with EFInsight™ cloud-based data collection, analytics, reporting, diagnostics, proactive maintenance, and process control tools. Get the insights you need to understand the economics of your production and the tools to maximize your single-pass inkjet printer investment.

- Provides data and dashboards to track main production KPIs essential for operations optimization and efficiency
- Monitors the system to ensure quality and prevent unexpected events, maximizing quality and uptime
- Connects seamlessly to your company's ERP system to feed it with real-time raw data from your Nozomi printer, fueling smarter decisions across your workflow



## Performance at-a-glance

Track key KPIs and system variables in real time with intuitive dashboards.

Gain instant visibility into productivity, consumption trends, and equipment status.

---

## Real insights, real efficiency

Analyze productivity by job type, shift, and operator. Identify idle time, bottlenecks, and preparation gaps to finetune operations and maximize throughput.

---

## Proactive maintenance

Minimize unplanned downtime with automated maintenance tracking and smart, analytics-driven scheduling. Stay ahead of potential issues with timely alerts and step-by-step maintenance plans.

---

## Ink tracking and inventory control

Monitor every drop—from warehouse to printhead. EFInsight helps you track ink inventory, control expiration dates, and trace what's loaded into the printer to ensure ink quality and prevent waste.

---

## Continuous innovation

EFInsight is a dynamic platform with new features and enhancements added regularly, keeping your print operation ahead of the curve.

---

Take control of your print operation – with EFInsight. Make your data work as hard as your printer.



## Let's be brilliant. Together.

We understand you want breakthrough technologies to lead you through your digital journey. That's why we're passionate about driving your business growth with a scalable portfolio of products, solutions, services, support, and world-class partnerships for the manufacturing of packaging, sign and display graphics, and textiles with a wide range of printers, inks, and software. Our unwavering commitment is to increase your profits, cut costs, improve productivity, and optimize efficiency — job after job, year after year. We're obsessed with your success. And we definitely believe we have the right people, technology and experience to help your business achieve its goals. Visit [www.efi.com](http://www.efi.com) or send an email to [info@efi.com](mailto:info@efi.com) for more information.



Nothing herein should be construed as a warranty in addition to the express warranty statement provided with EFI products and services.

BDR, Cretachrom, Cretaprint, the Cretaprint logo, Cretaprinter, Cretaroller, Divisional Graphics, Distancing Graphics, EFI, the EFI logo, Electronics For Imaging, EFIInsight, FabriVU, Fast-4, Inèdit, Inkintensity, Inkware, neoCatalog, neoStampa, neoTextil, PressVu, ProGraphics, Reggiani AQUA Prime, Reggiani AQUA Plus, Rialco, Riaplas, SDC, SafeGuard Graphics, UltraDrop, UltraPress, UltraTex, UltraVu, UV Series 50, VUTEk, and the VUTEk logo are trademarks or registered trademarks of Electronics For Imaging, Inc. and/or its wholly owned subsidiaries in the U.S. and/or certain other countries.

All other terms and product names may be trademarks or registered trademarks of their respective owners and are hereby acknowledged.

The information in this publication is covered under Legal Notices for this product.

© 2026 ELECTRONICS FOR IMAGING, INC. ALL RIGHTS RESERVED. | [WWW.EFI.COM](http://WWW.EFI.COM)

AC\_126\_01\_26\_US