



Nozomi 14000 SD

Single-pass LED Inkjet Printer for Sign and Display

Technology designed to disrupt



Boost your growth and profitability

The super-high-speed, high-quality production capabilities of the EFI™ Nozomi 14000 SD single-pass LED printing platform are nothing short of disruptive. The 1.4-meter-wide, modular, and scalable printing platform gives you the opportunity to significantly improve your speed to market and increase profitability.

The EFI Nozomi 14000 SD is specifically designed for the sign and display market and prints on a wide range of substrates – from polystyrene, foamboard, and Coroplast® to folding carton, card stock, and more.





Disrupt the status quo with exceptional print quality at super high speeds

Ready to disrupt marketplace expectations about digital inkjet image quality at super high speeds? The EFI Nozomi 14000 SD printer delivers premium quality imaging with CMYK plus optional White, Orange and Violet, a 720-dpi effective resolution, smooth gradients, and brilliant colors for litho-like quality and band-free imaging.

A competitive edge is only sharp when it's disruptive

Gain a larger share of the market and improve customer satisfaction – all while lowering your costs. With the EFI Nozomi 14000 SD printer you'll get higher productivity, reliable uptime and production efficiencies that will drive more profits to your bottom line.



The best opportunities are disruptive opportunities



Maximum productivity that assures more profits

BASE MODEL:

- Up to 1,100 boards/sheets per hour*
- Up to 164 linear feet per minute (50 linear meters per minute)

As your volume needs grow, add speed and fully automated loading:

- Pushing productivity up to 1,550 boards/sheets per hour*
- Up to 231 linear feet per minute (70 linear meters per minute)



Premium print quality that wins more jobs

- Optional Orange and Violet expand color gamut to achieve 97% of Pantone® library
- Artificial vision system for color adjustments and nozzle out detection
- Meets the demanding color standards of Fogra, G7 and GRACoL, ensuring color consistency throughout the digital printing process and other printing methods



Digital technology that drives production savings

- Reduce your cost-per-print by replacing make-ready from offset litho or screen print processes with digital
- Reduce your footprint and labor resources by consolidating production onto one Nozomi press
- Reduce your waste by printing direct to sheet and removing the lamination process



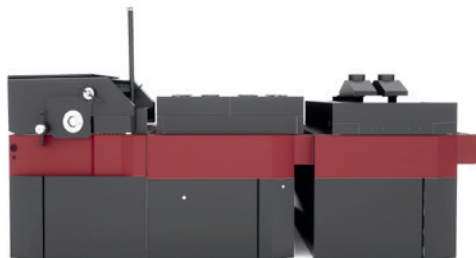
Superior sustainability that meets customer demands

- An efficient process that consumes fewer resources and generates less waste by consolidating all production onto one Nozomi press
- Single-pass ink pile reduces ink use and cost
- **100% environmentally friendly** GREENGUARD and GREENGUARD Gold certified inks with no VOCs and no odor
- Repulpable and recyclable inks, OCC certified, for paper-based substrates such as corrugated containerboard

* Sheet size: 1.4 x 2.4 m (52.12 x 94.49 in)

Modular and flexible, designed to grow as your business grows

Basic Configuration*



UV AND WB ANALOG PRIMER

- 149.6 in · 3,8 m



REGISTRATION TABLE

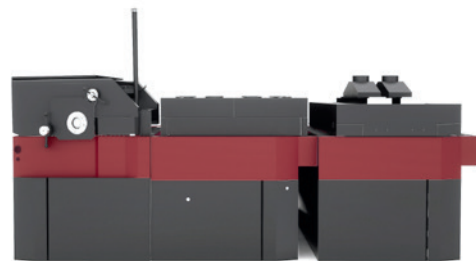
- 141.7 in · 3,6 m



SINGLE-UV LED

- 149.6 in

Premium Configuration*



UV AND WB ANALOG PRIMER

- 149.6 in · 3,8 m



REGISTRATION TABLE

- 141.7 in · 3,6 m



SINGLE-UV LED

- 149.6 in

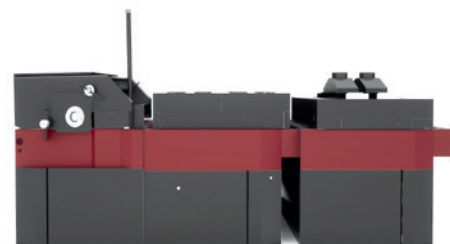
Automated Premium Configuration



FULL AUTO TOP FEEDER

w/ inspection & cleaning

- 262.8 in · 6,7 m



UV AND WB ANALOG PRIMER

- 149.6 in · 3,8 m



REGISTRATION TABLE

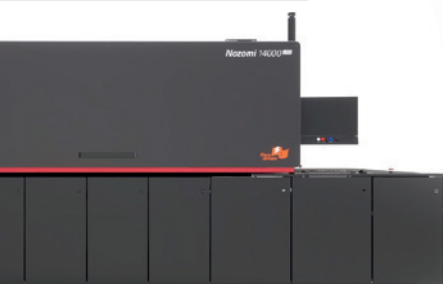
- 141.7 in · 3,6 m

* A scissor lift table (not included) is recommended to assist in the hand feeding of materials,



PASS INKJET PRINTER TECHNOLOGY

• 3,8 m



PASS INKJET PRINTER TECHNOLOGY

• 3,8 m



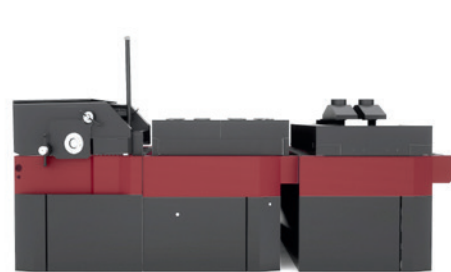
ATION TABLE

3,6 m



SINGLE-PASS INKJET PRINTER UV LED TECHNOLOGY

• 149.6 in · 3,8 m



UV / WB ANALOG COATER

• 98.4 in · 2,5 m

Max. print width: 4.6 ft · 1400 mm
 Max. board/sheet size (WxL): 4.6 f tx 8 ft · 1,4 m x 2,4 m upgradable to 4.6 f x 9.8 ft (1,4 m x 3 m)
 Thickness range: 0.012 in – 0.47 in · 0,3 mm - 12 mm for media that need priming
 (rigid substrates) 0.007 in – 0.47 in · 0,19 mm - 12 mm for media without priming
 Gap between boards/sheets: 11.81 in · 300 mm
 Regular productivity: 50 m/min or 1100 boards/h (boards of 4,6 ft x 8 ft – 1,4 m x 2,4 m)
 Enhanced print speed: 70 m/min or 1550 boards/h (boards of 4,6 ft x 8 ft – 1,4 m x 2,4 m)
 With premium configuration including full automated feeder

INK CONFIGURATIONS

BASE



OPTIONAL





Ultra-high-quality printing with **Genuine EFI Inks**

Our Genuine EFI Nozomi 14000 SD Series inks have been custom formulated, tested and optimized for the Nozomi 14000 SD printer. Both the system and inks are developed to assure you get great extended color gamut, durability, reliability, consistency, and predictable running costs. Add our extensive color range and best-in-class Fiery® color management suite, and you get all the quality and performance you'd expect from Genuine EFI Inks – so you always print with flying colors.



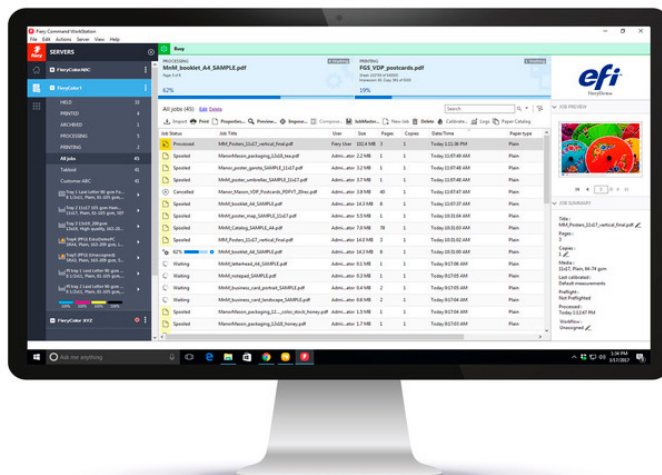
Fiery technology – the world leader in digital front end innovation



EFI Fiery digital front ends (DFEs) are the industry standard and the most popular choice across multiple print environments. To succeed in today's highly competitive market, it is critical to have a DFE with integrated workflow and color management to achieve higher operational efficiency and output quality. The Fiery NZ-1000 DFE provides outstanding image and color quality with features to make your print results truly exceptional.

Fiery technology delivers:

- Advanced color management and extensive toolset for late-stage image editing
- Exceptional print and color quality for complex, graphically rich content
- Stunning out-of-the-box color with the smoothest color blends, maximum shadow detail, and superb image definition
- Accurate reproduction of brand colors plus color matching for consistent print results
- Intelligent automation that can analyze print jobs and dynamically choose the optimal print settings, reducing setup time
- Efficient job management with easy handling of short runs and versioned or variable data printing jobs
- Full visibility into your production with accurate ink estimates and reporting of the actual ink used in print
- Advanced bladed hardware architecture with the processing power to ensure the highest throughput



*Centralize print
production control
with Fiery Command
WorkStation's intuitive
job management
interface*

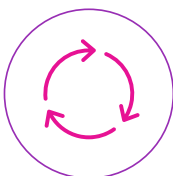
Value-added training and services working for you

We're there with you every step of the way – during installation, the ramp-up process, and during regular and intensive use – with the only purpose to ensure that you get the most out of your EFI Nozomi 14000 SD single-pass printing investment.



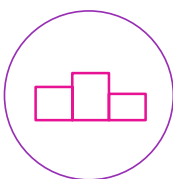
Ramp-up program

This 12-week program is designed to accelerate the learning curve and increase operator confidence with three weeks of hands-on operator and maintenance training plus nine weeks of onsite mentoring as you reach steady production.



Three keys of extended follow-up

With a focused goal of total machine stability, our extended follow-up is focused on three key areas: production monitoring, training, and maintenance. A senior field service engineer (FSE) works with you onsite for three months, and you're fully supported 24/7 by our remote support team.



Maintenance service

We offer different maintenance agreements levels based on production volumes for you to choose from to maintain optimal print quality, machine stability and reinforce technical training. The maintenance programs include routine procedures and best practices to ensure optimum condition of all components and to avoid unforeseen downtime.



Smart support

Remote training and support enhanced with augmented reality for real-time, see-what-I-see communication and faster time to resolution.

Add **intelligence** to your print business with Fiery IQ

Unlock the value of your production data by connecting your printers to Fiery IQ™. Use the Fiery IQ suite of cloud applications to make data-driven decisions so you can improve ROI, minimize cost, maximize profit, and boost revenue.

Fiery IQ lets you connect your people, processes, and print devices, so you can make better data-driven decisions. Use the EFI IQ applications to:

- Visualize key production data and the status of your printers in near real time
- Capture and transform print production data into actionable analytics to drive business improvement
- Stay connected to your print production systems, view print devices and monitor job data anytime, anywhere from your iOS and Android devices
- Receive alerts about production-blocking events, and automate the distribution of reports to ensure that you never miss any production issue

Build a stronger, more profitable business with your production data using Fiery IQ applications.



Let's be brilliant. Together.

We understand you want breakthrough technologies to lead you through your digital journey. That's why we're passionate about driving your business growth with a scalable portfolio of products, solutions, services, support, and world-class partnerships for the manufacturing of signage, packaging, textiles, ceramic tiles, and building materials with a wide range of printers and inks. Our unwavering commitment is to increase your profits, cut costs, improve productivity, and optimize efficiency — job after job, year after year. We're obsessed with your success. And we definitely believe we have the right people, technology and experience to help your business achieve its goals. Visit www.efi.com or send an email to info@efi.com for more information.



Nothing herein should be construed as a warranty in addition to the express warranty statement provided with EFI products and services.

BDR, Cretachrom, Cretaprint, the Cretaprint logo, Cretaprinter, Cretaroller, Divisional Graphics, Distancing Graphics, EFI, the EFI logo, Electronics For Imaging, FabriVU, Fast-4, Inèdit, Inkintensity, Inkware, neoCatalog, neoStampa, neoTextil, PressVu, ProGraphics, Rialco, Riaplas, SDC, SafeGuard Graphics, UltraDrop, UltraPress, UltraTex, UltraVu, UV Series 50, VUTEK, and the VUTEK logo are trademarks or registered trademarks of Electronics For Imaging, Inc. and/or its wholly owned subsidiaries in the U.S. and/or certain other countries.

All other terms and product names may be trademarks or registered trademarks of their respective owners and are hereby acknowledged.