



Reggiani Digital Product Range
Digital Printers for Textile Applications

As **scalable** as
your business

A complete line up of printers to accompany

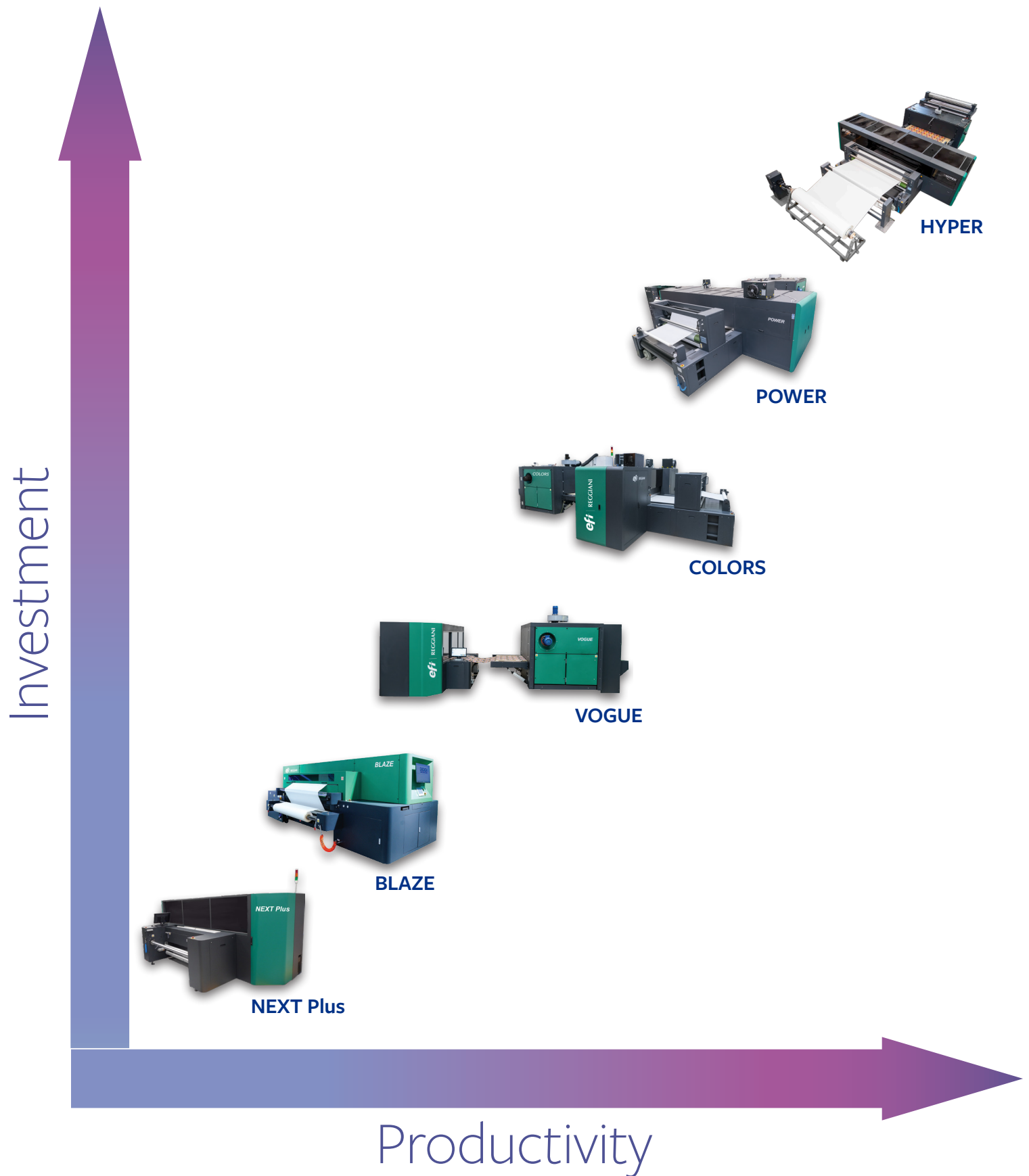
From small businesses to complex industrial plants, EFI Reggiani offers high-performance solutions that keep textiles and profit flowing.

Our scan printers are the global leading technologies for virtually every fabric and paper printing application.

Outstanding productivity and performance, and printing accuracy and quality, combined with low ink consumption, give you the most competitive cost per meter available on the market.

Printer model	FABRIC	PAPER
EFI Reggiani NEXT Plus	✓	✓
EFI Reggiani BLAZE	✓	
EFI Reggiani VOGUE	✓	
EFI Reggiani COLORS	✓	✓
EFI Reggiani POWER	✓	✓
EFI Reggiani HYPER	✓	✓

our customers through their digital journey





At a glance

- Truly industrial, robust printer with high-speed performance
- All-in-one solution: Ink system, color feeding, electrical cabinet and drying unit
- Enhanced design possibilities and expanded color gamut with up to 8 colors
- Improved paper handling with high ink laydowns
- More ink lay down at the same speed – ideal for sportswear and high-density applications
- Improved printing quality thanks to new high-uniformity printing modes
- High reliability and minimum downtime
- Enhanced proprietary software
- Easy integration with online shops and web2print businesses

APPLICATIONS

Fashion	✓
Home textile	✓
Outdoor	✓
Sportswear and footwear	✓

INKS

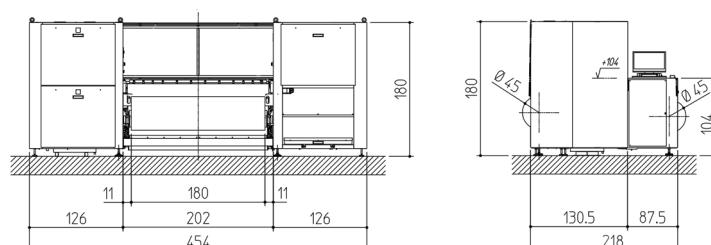
Disperse sublimation	✓
----------------------	---

SUBSTRATES

Paper	✓
Non-elastic fabric	✓

SPECIFICATIONS

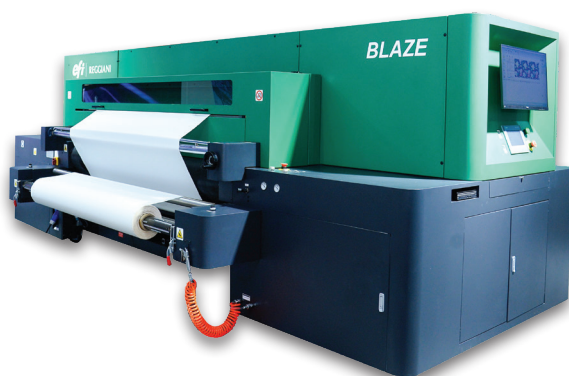
Printing width	71-134 in (180-340 cm)
Production speed	Up to 4,036 ft ² /h (375 sqm/h) 134 in (340 cm) width
Print heads	8
Printing resolution	Up to 600 x 4800 dpi
Paper weight	1.34 to 5.29 oz/sqft (38 to 150 gr/sqm)
Substrate feed (Entry) and take-up (Exit)	Mini jumbo roll up to Ø 18 in (450 mm)
Dryer	Electrically heated plate





Reggiani BLAZE

Digital Printer for Direct Printing on Fabric

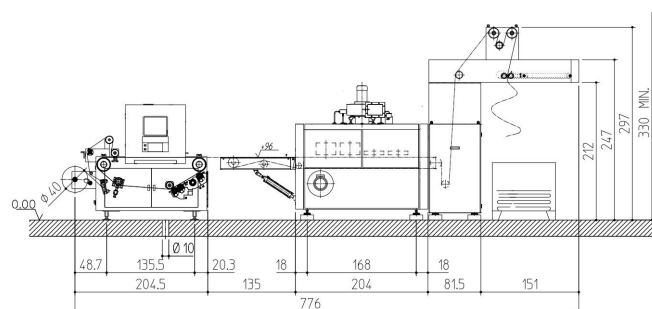


At a glance

- Easy and smart solution to step into the industrial textile segment
- Ideal for both production and sampling
- Compact footprint
- Ink recirculation system for superior reliability and minimum maintenance at start up and during production
- Maximum flexibility on the widest variety of designs
- Smooth and precise material handling of knitted and woven fabrics
- Superior print head reliability and low maintenance costs for competitive TCO
- Optimized ink performance with EFI Reggiani inks

SPECIFICATIONS	
Printing width	71 in (180 cm)
Production speed	Up to 3,875 ft ² /h (360 sqm/h)
Print heads	8
Printing resolution	Up to 600 x 1200 dpi
Fabric weight	From 1.06 to 12.34 oz/sqft (30 to 350 gr/sqm) (woven and knitted)
Fabric feed (Entry)	Roll unwinder up to Ø 16 in (400 mm)
Fabric take-up (Exit)	Oscillating brace for fold Roll winder up to Ø 16 in (400 mm) Fold and roll winder up to Ø 16 in (400 mm) (optional)
Dryer	Symmetric ventilation and high efficiency exhaust capacity Heating sources available: gas, electricity, oil and steam

APPLICATIONS	
Fashion	✓
Home textile	✓
Sportswear and footwear	✓
Outdoor	✓
INKS	
Reactive	✓
Acid	✓
Disperse direct	✓
Disperse sublimation	✓
Textile pigment	✓
SUBSTRATES	
Cotton	✓
Polyester	✓
Polyamide	✓
Silk	✓
Viscose	✓
Polyester and elastane	✓
Polyamide and elastane	✓
Blends	✓





Reggiani VOGUE

Digital Printer for Direct Printing on Fabric



At a glance

- Dramatic reduction of maintenance needs and stoppages thanks to enhanced ink recirculation system
- Increased tolerance to environmental conditions
- Real-time image processing
- Printing parameters and geometry change on the fly
- Easy-to-plan and flexible queue and job list
- Ink consumption and speed prediction before printing
- Proprietary print head electronics embedded in a fully enclosed protection cap with a single cable
- Easy print head removal and simplified print carriage layout
- Quick and tool free print head alignment
- Industry 4.0 friendly

SPECIFICATIONS

Printing width	71 in (180 cm)
Production speed	Up to 3,498 ft ² /h (325 sqm/h)
Print heads	16
Printing resolution	Up to 600 x 2400 dpi
Fabric weight	From 1.06 to 12.34 oz/sqft (30 to 350 gr/sqm) (woven and knitted)
Fabric feed (Entry)	Roll unwinder up to ø 16 in (400 mm) Big roll unwinder (A frame) up to ø 63 in (1.600 mm)
Fabric take-up (Exit)	Fold Roll winder up to ø 16 in (400 mm) Fold and roll winder up to ø 16 in (400 mm) (optional)
Dryer	One industrial chamber with conveyor belt with one or three passages

APPLICATIONS

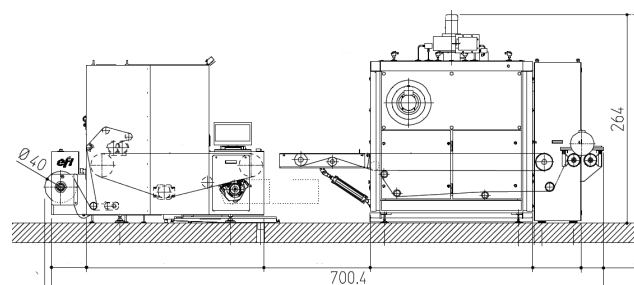
Fashion	✓
Home textile	✓
Sportswear and footwear	✓
Outdoor	✓

INKS

Reactive	✓
Acid	✓
Disperse direct	✓
Disperse sublimation	✓
Textile pigment	✓

SUBSTRATES

Cotton	✓
Polyester	✓
Polyamide	✓
Silk	✓
Viscose	✓
Polyester and elastane	✓
Polyamide and elastane	✓
Blends	✓
Wool	✓





Reggiani COLORS

Digital Printer for Direct Printing on Fabric and Paper

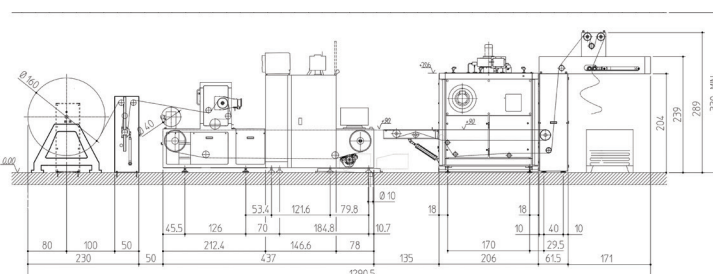
At a glance

- Extended colour gamut and superior color depth
- Enhanced printing quality and uniformity
- Possibility to create your own color configuration with light, fluorescent and special colors
- Superior productivity: can achieve same color depth at higher speed
- Higher reliability thanks to print head redundancy
- Increased penetration and superior fastness
- Enhanced continuous ink recirculation system
- New printing software allowing real-time image processing
- Proprietary electronics
- Industry 4.0 friendly



SPECIFICATIONS	
Printing width	71-94-134 in (180-240-340 cm)
Production speed	Up to 6,082 ft ² /h (565 sqm/h) 71 in (180 cm) width
Print heads	24
Printing resolution	Up to 600 x 2400 dpi
Fabric weight	From 1.06 to 16 oz/sqft (30 to 450 gr/sqm)
Fabric feed (Entry)	Small roll unwinder up to ø 16 in (400 mm) Big roll unwinder (A frame) up to ø 63 in (1,600 mm) Fold
Fabric take-up (Exit)	Fold Small roll winder up to ø 16 in (400 mm) Fold and small roll winder up to ø 16 in (400 mm) Big roll winder (A frame) up to ø 63 in (1,600 mm)
Paper feed (Entry)	Standard roll unwinder up to ø 16 in (400 mm) Jumbo roll unwinder up to ø 35 in (900 mm)
Paper take-up (Exit)	Jumbo roll winder up to ø 35 in (900 mm) Revolving winder turret (2 rolls up to ø 14 in) (350 mm)
Dryer	One industrial chamber

APPLICATIONS	
Fashion	✓
Home textile	✓
Outdoor	✓
Sportswear and footwear	✓
INKS	
Disperse Direct	✓
Reactive	✓
Acid	✓
Disperse sublimation	✓
Textile pigment	✓
SUBSTRATES	
Cotton	✓
Polyester	✓
Polyamide	✓
Silk	✓
Viscose	✓
Polyester and elastane	✓
Polyamide and elastane	✓
Blends	✓
Wool	✓
Sublimation paper	✓



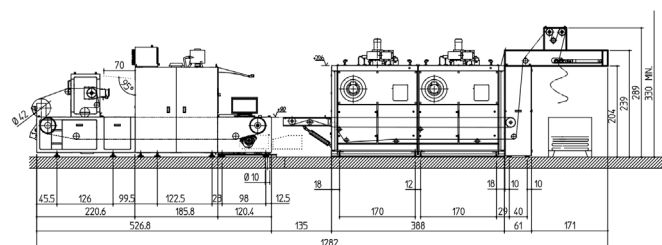
At a glance

- Superior versatility to manage a wider variety of inks
- Dramatic reduction of maintenance needs and stoppages
- Increased tolerance to environmental conditions
- Real-time image processing
- Printing parameters and geometry change on the fly
- Easy-to-plan and flexible queue and job list
- Print head electronics in a fully enclosed protection cap
- Simplified print carriage layout for quicker set up time and increased reliability
- Easy print head removal
- Quick and tool free print head alignment
- Industry 4.0 friendly



SPECIFICATIONS	
Printing width	71, 94, 134 in (180,240,340 cm)
Production speed	Up to 10,979 ft ² /h (1020 sqm/h) 71 in (180 cm) width
Print heads	32
Printing resolution	Up to 600 x 2400 dpi
Fabric weight	From 1.06 to 16 oz/sqft (30 to 450 gr/sqm)
Fabric feed (Entry)	Small roll unwinder up to ø 16 in (400 mm) Big roll unwinder (A frame) up to ø 63 in (1,600 mm) Fold
Fabric take-up (Exit)	Fold Small roll winder up to ø 16 in (400 mm) Fold and small roll winder up to ø 16 in (400 mm) Big roll winder (A frame) up to ø 63 in (1,600 mm)
Dryer (Fabric)	Two industrial chambers
Paper feed (Entry)	Standard roll unwinder up to ø 16 in (400 mm) Jumbo roll unwinder up to ø 35 in (900 mm)
Paper take-up (Exit)	Jumbo roll winder up to ø 35 in (900 mm) Revolving winder turret (2 rolls up to ø 14 in (350 mm))
Dryer (Paper)	One/two industrial chambers

APPLICATIONS	
Fashion	✓
Home textile	✓
Outdoor	✓
Sportswear and footwear	✓
INKS	
Disperse Direct	✓
Reactive	✓
Acid	✓
Disperse sublimation	✓
Textile pigment	✓
SUBSTRATES	
Cotton	✓
Polyester	✓
Polyamide	✓
Silk	✓
Viscose	✓
Polyester and elastane	✓
Polyamide and elastane	✓
Blends	✓
Wool	✓
Sublimation paper	✓



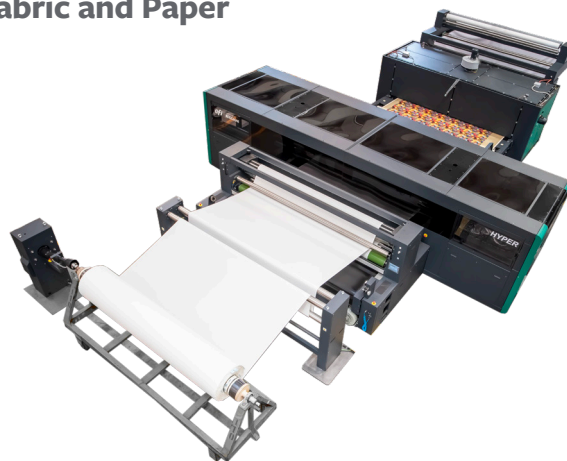


Reggiani HYPER

Digital Printer for Direct Printing on Fabric and Paper

At a glance

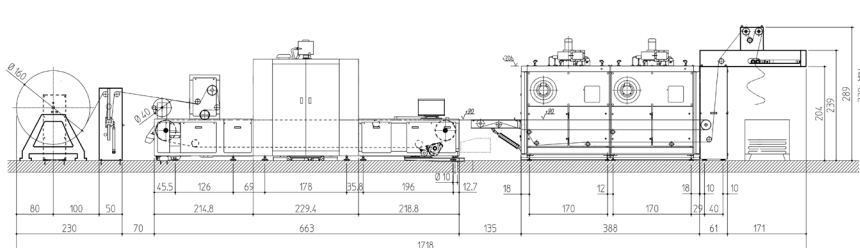
- Fastest scan digital printer in the market, reaching an actual production speed of 2,717 lft/h (828 lm/h)
- 72 new print heads available only on the HYPER with recirculation to the nozzle plate so it's always ready to print
- Proprietary continuous ink recirculation system to reduce maintenance at start up and during production
- Outstanding printing quality and extreme design versatility thanks to a wide range of printing modes
- Longitudinal belt movement control for superior printing accuracy



SPECIFICATIONS	
Printing width	71, 94, 134 in (180,240,340 cm)
Production speed	Up to 21,183 ft ² /h (1968 sqm/h) 71 in (180 cm) width
Print heads	72
Printing resolution	Up to 600 x 2400 dpi
Fabric weight	From 1.06 to 16 oz/sqft (30 to 450 gr/sqm)
Fabric feed (Entry)	Small roll unwinder up to ø 16 in (400 mm) Big roll unwinder (A frame) up to ø 63 in (1,600 mm) Fold
Fabric take-up (Exit)	Fold Small roll winder up to ø 16 in (400 mm) Big roll winder (A frame) up to ø 63 in (1,600 mm)
Dryer	Industrial double section dryer Symmetric ventilation and high efficiency exhaust capacity Heating sources available: gas, electricity, oil and steam

APPLICATIONS	
Apparel and accessories	✓
Home textile	✓
Outdoor	✓
Sportswear and footwear	✓
INKS	
Disperse Direct	✓
Reactive	✓
Acid	✓
Disperse sublimation	✓
Textile pigment	✓
SUBSTRATES	
Cotton	✓
Polyester	✓
Polyamide	✓
Silk	✓
Viscose	✓
Polyester and elastane	✓
Polyamide and elastane	✓
Blends	✓
Wool	✓
Sublimation paper	✓

More options for sublimation paper configuration

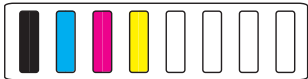


Printer comparison

Use these quick comparison tables to find the right EFI Reggiani digital printer for your production needs.

EFI REGGIANI NEXT PLUS 180			
RESOLUTION	PASS	LFT/H (LM/H)	SQFT/H (SQM/H)
600 x 300	1	689 (210)	3,391 (315)
600 x 600	2	377 (115)	1,884 (175)
600 x 900	3	246 (75)	1,238 (115)
600 x 1200	4	164 (50)	807 (75)

C M Y K
4 COLORS
4 HEADS



C M Y K
4+4 COLORS
8 HEADS



C M Y K
8 COLORS
8 HEADS

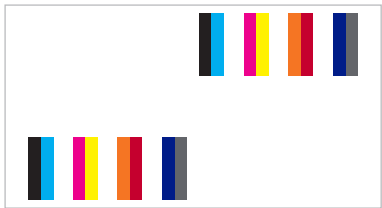


EFI REGGIANI NEXT PLUS 340			
RESOLUTION	PASS	LFT/H (LM/H)	SQFT/H (SQM/H)
600 x 300	1	410 (125)	4,036 (375)
600 x 600	2	230 (70)	2,260 (210)
600 x 900	3	148 (45)	1,453 (135)
600 x 1200	4	115 (35)	1,130 (105)

EFI Reggiani NEXT Plus: regulatory model NEXT

EFI REGGIANI BLAZE			
RESOLUTION	PASS	LFT/H (LM/H)	SQFT/H (SQM/H)
600 x 300	1	787 (240)	3,875 (360)
600 x 600	2	410 (125)	2,045 (190)
600 x 900	3	279 (85)	1,399 (130)
600 x 1200	4	197 (60)	1,023 (95)

C M Y K
8 COLORS
8 HEADS

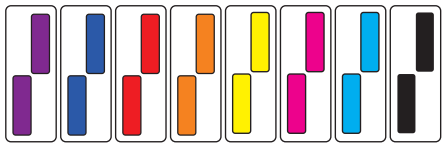


*Further color configurations available

EFI Reggiani BLAZE: regulatory model BLAZE

EFI REGGANI VOGUE			
RESOLUTION	PASS	LM/H	SQM/H
600 x 600	2	705 (215)	3,498 (325)
600 x 900	3	476 (145)	2,368 (220)
600 x 1200	4	344 (105)	1,722 (160)

C M Y K
8 COLORS
16 HEADS
8 EACH ROW



*Further color configurations available

EFI Reggiani VOGUE: regulatory model ReNOIR 180

EFI REGGIANI COLORS 180 12 COLORS CONFIGURATION*			
RESOLUTION	PASS	LM/H	SQM/H
600 x 300	1	1,230 (375)	6,082(565)
600 x 600	2	640 (195)	3,175 (295)
600 x 900	3	410 (125)	2,045(190)
600 x 1200	4	312 (95)	1,561 (145)

EFI REGGIANI COLORS 340 12 COLORS CONFIGURATION*			
RESOLUTION	PASS	LM/H	SQM/H
600 x 300	1	781 (238)	7,685 (714)
600 x 600	2	413 (126)	4,068(378)
600 x 900	3	292 (89)	2,874 (267)
600 x 1200	4	210 (64)	2,066(192)

* 6+6 configuration: double ink laydown at same speed

EFI REGGIANI POWER 180*			
RESOLUTION	PASS	LM/H	SQM/H
600 x 300	1	2,230 (680)	10,979 (1020)
600 x 600	2	1,263 (385)	6,243 (580)
600 x 900	3	853 (260)	4,198 (390)
600 x 1200	4	639 (195)	3,175 (295)

EFI REGGIANI POWER 340*			
RESOLUTION	PASS	LM/H	SQM/H
600 x 300	1	1,509 (460)	14,854 (1380)
600 x 600	2	787 (240)	7,750 (720)
600 x 900	3	590 (180)	5,812 (540)
600 x 1200	4	394 (120)	3,875 (360)

* Paper configuration: double ink laydown at same speed

EFI REGGIANI HYPER 180					
RES	PASS	STANDARD SPEED LM/H	STANDARD SPEED SQM/H	FAST SPEED* LM/H	FAST SPEED* SQM/H
600x300	1	3,678 (1121)	18,105 (1682)	4,304(1312)	21,183(1968)
600x600	2	2,261 (689)	11,130 (1034)	2,717 (828)	13,369(1242)
600x900	3	1,608 (490)	7,911 (735)	1,814 (553)	8,934(830)
600x1200	4	1,220 (372)	6,006 (558)	1,365 (416)	6,717 (624)

EFI REGGIANI HYPER 340					
RES	PASS	STANDARD SPEED LM/H	STANDARD SPEED SQM/H	FAST SPEED* LM/H	FAST SPEED* SQM/H
600x300	1	2,851 (869)	28,061(2607)	3,445(1050)	33,906 (3150)
600x600	2	1,680 (512)	16,533 (1536)	2,077 (633)	20,441(1899)
600x900	3	1,175 (358)	11,560 (1074)	1,385 (422)	13,627(1266)
600x1200	4	886 (270)	8,719 (810)	1,040 (317)	10,237(951)

* Maximum speed (1 pass) represents a draft mode. Fast speed mode powered by a selection of EFI Reggiani Genuine Inks.

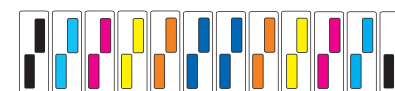
EFI Reggiani HYPER: Regulatory model ReNOIR 180, ReNOIR 240, ReNOIR 340

More options for sublimation paper configuration

Several color combinations available
(24 print heads, 12 each row):



12 COLORS



6 + 6 COLORS

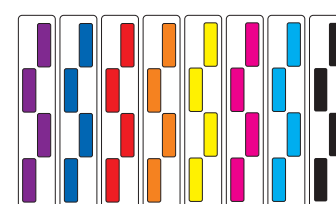


11 COLORS + CHEMISTRY

EFI Reggiani COLORS: regulatory model
ReNOIR 180, ReNOIR 240, ReNOIR 340



8 COLORS
32 HEADS
8 EACH ROW

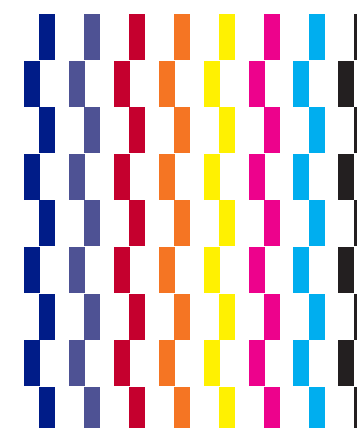


* Further color configurations available

EFI Reggiani POWER: regulatory model
ReNOIR 180, ReNOIR 240, ReNOIR 340



8 COLORS
72 HEADS
9 EACH ROW



*Further colour configurations available

Let's be brilliant. Together.

We understand you want breakthrough technologies to lead you through your digital journey. That's why we're passionate about driving your business growth with a scalable portfolio of products, solutions, services, support, and world-class partnerships for the manufacturing of signage, packaging, textiles, ceramic tiles, and building materials with a wide range of printers and inks. Our unwavering commitment is to increase your profits, cut costs, improve productivity, and optimise efficiency — job after job, year after year. We're obsessed with your success. And we definitely believe we have the right people, technology and experience to help your business achieve its goals. Visit www.efi.com/reggiani or call +39 035 3844511 for more information.



Nothing herein should be construed as a warranty in addition to the express warranty statement provided with EFI products and services.

AutoCal, Best Eye, ColorGuard, ColorPASS, ColorRight, ColorWise, Command WorkStation, Cretachrom, Cretaprint, the Cretaprint logo, Cretaprinter, Cretaroller, Divisional Graphics, Distancing Graphics, DocBuilder, Dynamic Wedge, EDOX, EFI, the EFI logo, Electronics For Imaging, FabriVU, Fast-4, FASTRIP, FASTDRIVE, Fiery, the Fiery logo, Fiery Compose, Fiery Driven, the Fiery Driven logo, Fiery Edge, Fiery Essential, Fiery HyperRIP, Fiery Impose, Fiery Impress, Fiery ImageViewer, Fiery Intensify, Fiery JobExpert, Fiery JobFlow, Fiery JobMaster, Fiery Navigator, Fiery Prep-it, Fiery Prints, the Fiery Prints logo, Fiery TrueBrand, FreeForm, Inkintensity, Inkware, IQ, MicroPress, OneFlow, PressVu, PrintMe, the PrintMe logo, Prograph, ProGraphics, RIPChips, RIP-While-Print, SafeGuard Graphics, Spot-On, Spot Pro, UltraDrop, UltraPress, UltraTex, UltraVu, UV Series 50, VUTEk, the VUTEk logo, and WebTools are trademarks or registered trademarks of Electronics For Imaging, Inc. and/or its wholly owned subsidiaries in the U.S. and/or certain other countries.

All other terms and product names may be trademarks or registered trademarks of their respective owners and are hereby acknowledged.